

SDHEC NPDES STANDARD NOTES (2012 COP)

- 31 - Remove\_Monitoring Well - Q1 1 EA
- 46 - Silt fences (2/C500) - Q1 374 LY
- 47 - Inlet Silt Protection (4/C500) - Q1 47 LY
- 48 - Tree Protection Barricade (1/C500) - Q1 366 SY
- 49 - Inlet Silt Protection (1/C501) - Q1 14 LY
- 50 - Contractor Fence Gate -20ft - Q1 2 EA
- 51 - Contractor\_fence - Q1 76 LY
- 52 - Construction Ent\_Non-Woven Geotextile Fabric (3/C500) - Q1 226 SY
- 53 - Construction Ent\_Rock Pad Stone-2-3inches (3/C500) - Q1 226 SY
- 82 - Concrete Washout Sign - Q1 1 EA
- 90 - Concrete Washout Area - Q1 1 EA

31 EXCEED EIGHT (8) VERTICAL FEET SHOULD BE STABILIZED WITH SYNTHETIC OR VEGETATIVE MATS, IN ADDITION TO ANY NECESSARY TO INSTALL TEMPORARY SLOPE DRAINS DURING CONSTRUCTION. TEMPORARY BERMS MAY BE BROUGHT TO GRADE.

ALL BE INITIATED AS SOON AS PRACTICABLE IN PORTIONS OF THE SITE WHERE CONSTRUCTION ACTIVITIES HAVE BEEN INITIATED, BUT IN NO CASE MORE THAN FORTY-EIGHT (48) DAYS AFTER WORK HAS CEASED, EXCEPT AS STATED BELOW. THE 14-DAY IS PRECLUDED BY SNOW COVER OR FROZEN GROUND CONDITIONS.

CONTRACTOR SHALL BE INSPECTED ONCE EACH CALENDAR WEEK. IF PERIODIC INSPECTION OR OTHER AT A BMP HAS BEEN INAPPROPRIATELY, OR INCORRECTLY, THE PERMITTEE MUST ADDRESS THE NECESSARY TO CORRECT THE BMP WITHIN 48 HOURS OF IDENTIFICATION.

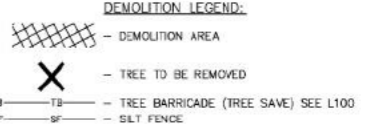
OTHER CONTROL DEVICES, AS MAY BE REQUIRED, TO CONTROL SOIL EROSION DURING UTILITY CONSTRUCTION, ALL CLEANED, GRADED, AND STABILIZED WITH GRASSING IMMEDIATELY AFTER THE UTILITY INSTALLATION. FILL, COVER, THE END OF EACH DAY ARE RECOMMENDED. IF WATER IS ENCOUNTERED WHILE TRENCHING, THE WATER SHOULD BE PUMPED BACK INTO ANY WATERS OF THE STATE.

ALL TEMPORARY CONTROL DEVICES SHALL BE REMOVED ONCE CONSTRUCTION IS COMPLETE AND THE SITE IS STABILIZED.

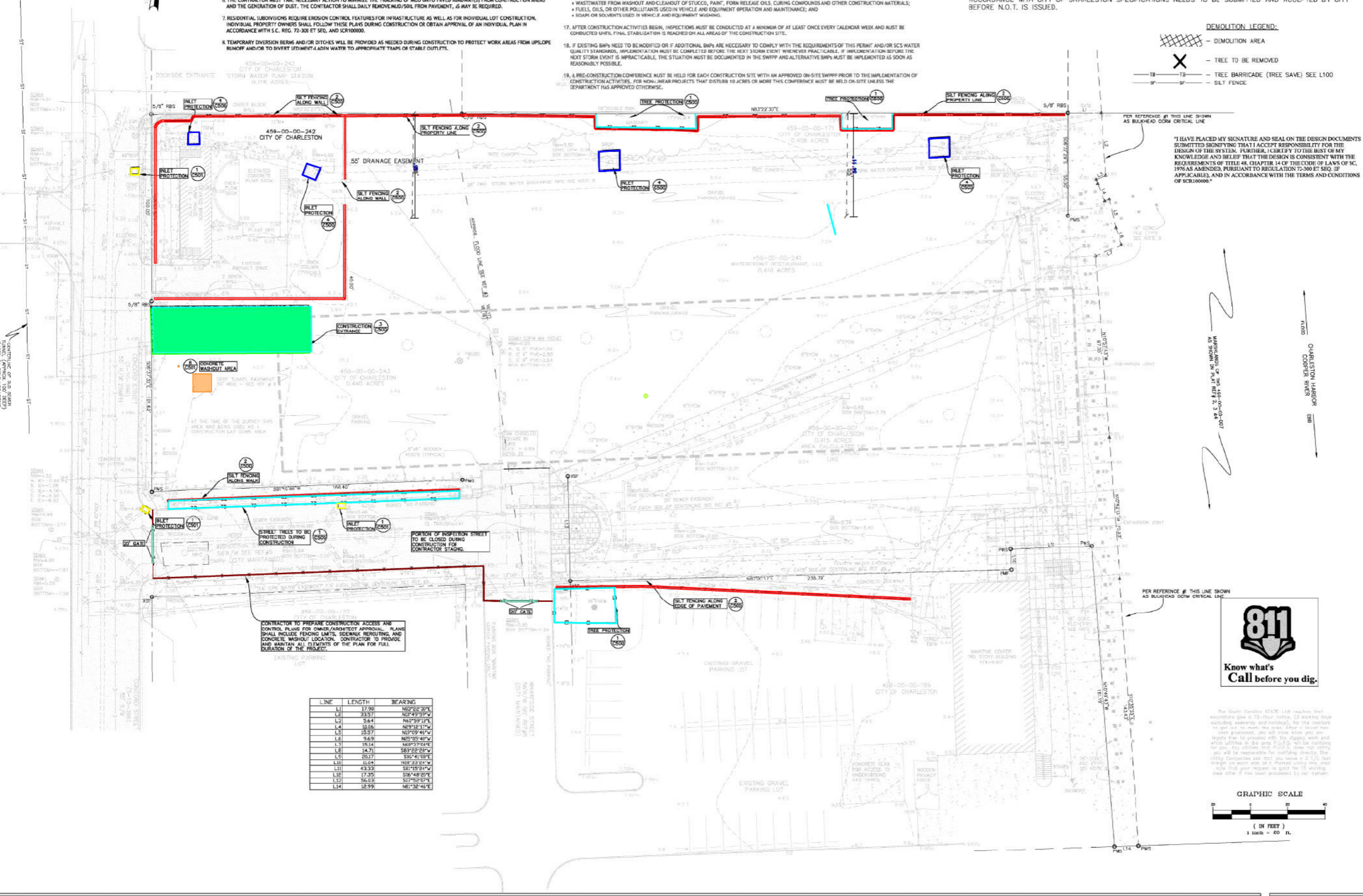
9. ALL WATERS OF THE STATE (WOS), INCLUDING WETLANDS, ARE TO BE FLAGGED OR OTHERWISE CLEARLY MARKED IN THE FIELD. A DOUBLE ROW OF SILT FENCE IS TO BE INSTALLED IN ALL AREAS WHERE A 50-FOOT BUFFER CANT BE MAINTAINED BETWEEN THE DISTURBED AREA AND ALL WOS. A 10-FOOT BUFFER SHOULD BE MAINTAINED BETWEEN THE LAST ROW OF SILT FENCE AND ALL WOS.
10. LITTER, CONSTRUCTION DEBRIS, OILS, FUELS, AND BUILDING PRODUCTS WITH SIGNIFICANT POTENTIAL FOR IMPACT SUCH AS STOCKPILES OF FRESHLY TREATED LUMBER AND CONSTRUCTION CHEMICALS THAT COULD BE EXPOSED TO STORM WATER MUST BE PREVENTED FROM BECOMING A POLLUTANT SOURCE IN STORM WATER DISCHARGES.
11. A COPY OF THE SWPPP, INSPECTIONS RECORDS, AND RAINFALL DATA MUST BE RETAINED AT THE CONSTRUCTION SITE OR A NEARBY LOCATION DAILY ACCESSIBLE DURING NORMAL BUSINESS HOURS, FROM THE DATE OF COMMENCEMENT OF CONSTRUCTION ACTIVITIES TO THE DATE THAT FINAL STABILIZATION IS REACHED.
12. INITIATE STABILIZATION MEASURES ON ANY EXPOSED STEEP SLOPE (3% OR GREATER) WHERE LAND-DISTURBING ACTIVITIES HAVE PERMANENTLY OR TEMPORARILY CEASED, AND WILL NOT RESUME FOR A PERIOD OF 7 CALENDAR DAYS.
13. MINIMIZE SOIL COMPACTION AND, UNLESS INFEASIBLE, PRESERVE TOPSOIL.
14. MINIMIZE THE DISCHARGE OF POLLUTANTS FROM EQUIPMENT AND VEHICLE WASHING, WHEEL WASH WATER, AND OTHER WASH WATER. WASH WATERS MUST BE TREATED IN A SEDIMENT BASIN OR ALTERNATIVE CONTROL THAT PROVIDES EQUIVALENT OR BETTER TREATMENT PRIOR TO DISCHARGE.
15. MINIMIZE THE DISCHARGE OF POLLUTANTS FROM DEWATERING OF TRENCHES AND EXCAVATED AREAS. THESE DISCHARGES ARE TO BE ROUTED THROUGH APPROPRIATE BMPs (SEDIMENT BASIN, FILTER BAG, ETC.).
16. THE FOLLOWING DISCHARGES FROM SITES ARE PROHIBITED:
  - WASTEWATER FROM WASHOUT OF CONCRETE, UNLESS MANAGED BY AN APPROPRIATE CONTROL;
  - WASTEWATER FROM WASHOUT AND CLEANOUT OF STUCCO, PAINT, FURNACE OILS, CURING COMPOUNDS AND OTHER CONSTRUCTION MATERIALS;
  - FUELS, OILS, OR OTHER POLLUTANTS USED IN VEHICLE AND EQUIPMENT OPERATION AND MAINTENANCE; AND
  - SOLIDS OR SOLVENTS USED IN VEHICLE AND EQUIPMENT WASHING.
17. AFTER CONSTRUCTION ACTIVITIES BEGIN, INSPECTIONS MUST BE CONDUCTED AT A MINIMUM OF AT LEAST ONCE EVERY CALENDAR WEEK AND MUST BE CONDUCTED UNTIL FINAL STABILIZATION IS REACHED ON ALL AREAS OF THE CONSTRUCTION SITE.
18. IF EXISTING BMPs NEED TO BE MODIFIED OR IF ADDITIONAL BMPs ARE NECESSARY TO COMPLY WITH THE REQUIREMENTS OF THIS PERMIT AND/OR SCs WATER QUALITY STANDARDS, IMPLEMENTATION MUST BE COMPLETED BEFORE THE NEXT STORM EVENT WHENEVER PRACTICABLE. IF IMPLEMENTATION BEFORE THE NEXT STORM EVENT IS IMPRACTICABLE, THE SITUATION MUST BE DOCUMENTED IN THE SWPPP AND ALTERNATIVE BMPs MUST BE IMPLEMENTED AS SOON AS REASONABLY POSSIBLE.
19. A PRE-CONSTRUCTION CONFERENCE MUST BE HELD FOR EACH CONSTRUCTION SITE WITH AN APPROVED ON-SITE SWPPP PRIOR TO THE IMPLEMENTATION OF CONSTRUCTION ACTIVITIES. FOR NON-LINEAR PROJECTS THAT DISTURB 10 ACRES OR MORE THIS CONFERENCE MUST BE HELD ON-SITE UNLESS THE DEPARTMENT HAS APPROVED OTHERWISE.

SWPPP NOTES

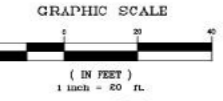
- 1) CONTRACTOR TO INSTALL PERMETER CONTROLS AND CONSTRUCTION ACCESS POINTS. CONTRACTOR TO ENSURE EXISTING EROSION CONTROL DEVICES REMAIN INTACT DURING PROJECT DURATION.
- 2) CLEARING, GRUBBING, AND DEVOLUTION.
- 3) ROUGH GRADING AND INSTALLATION OF STORM DRAINAGE LINES AND STRUCTURES.
- 4) INSTALL SEDIMENT CONTROLS AT ALL STRUCTURES WITHIN 5 DAYS OF STRUCTURE INSTALLATION.
- 5) PAVING AND FINAL SITE GRADING.
- 6) LANDSCAPE PLANTING, SODDING, AND GRASSING.
- 7) REMOVE ALL TEMPORARY EROSION & SEDIMENT CONTROL BMP FOLLOWING FINAL INSPECTIONS.
- 8) SUBMIT AS-BUILT SURVEY TO PROJECT ENGINEER AS REQUIRED.
- 9) PERMANENT MAINTENANCE COVENANTS AND AS-BUILT DRAWINGS FOR STORMWATER FACILITIES IN ACCORDANCE WITH CITY OF CHARLESTON SPECIFICATIONS NEEDS TO BE SUBMITTED AND ACCEPTED BY CITY BEFORE N.O.T. IS ISSUED.



"I HAVE PLACED MY SIGNATURE AND SEAL ON THE DESIGN DOCUMENTS SUBMITTED SIGNIFYING THAT I ACCEPT RESPONSIBILITY FOR THE DESIGN OF THE SYSTEM. FURTHER, I CERTIFY TO THE BEST OF MY KNOWLEDGE AND BELIEF THAT THE DESIGN IS CONSISTENT WITH THE REQUIREMENTS OF TITLE 46, CHAPTER 14 OF THE CODE OF LAWS OF SC, 1976 AS AMENDED, PURSUANT TO REGULATION 72-300 ET SEQ. IF APPLICABLE, AND IN ACCORDANCE WITH THE TERMS AND CONDITIONS OF SCR100000."



The South Carolina 811® call system that registers your 811® number, 24 hours a day, 7 days a week, for the location of underground utilities. Before you dig, you must know what you are digging through. The 811® call system will provide you with the location of underground utilities in the area. 811® will be calling you back with the location of underground utilities. The utility companies will be responsible for marking the site. The utility companies will be responsible for marking the site. The utility companies will be responsible for marking the site.



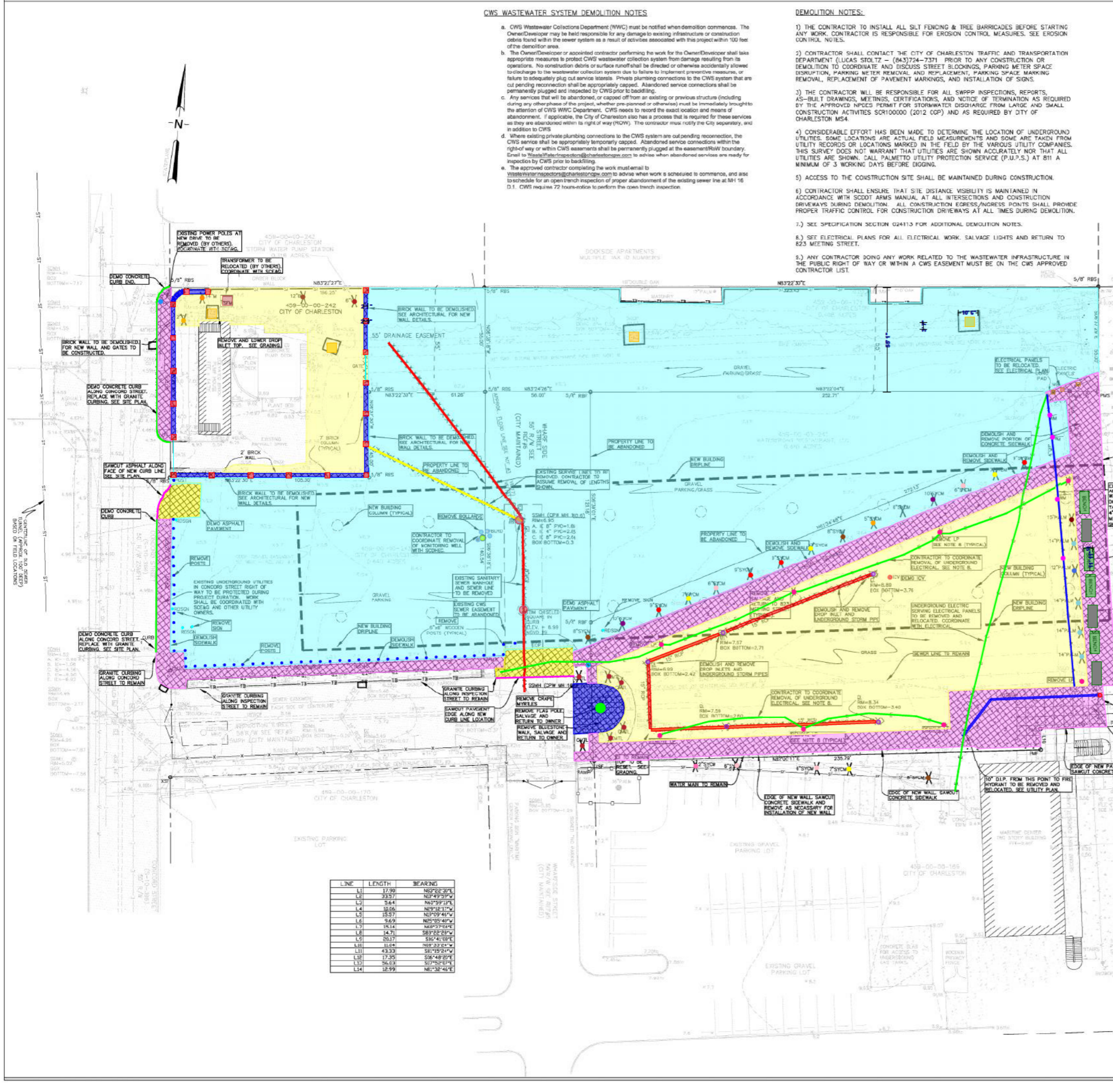
**CWS WASTEWATER SYSTEM DEMOLITION NOTES**

- CWS Wastewater Collections Department (CWS) must be notified when demolition commences. The Owner/Developer may be held responsible for any damage to existing infrastructure or construction debris found within the sewer system as a result of activities associated with this project within 100 feet of the demolition area.
- The Owner/Developer or appointed contractor performing the work for the Owner/Developer shall take appropriate measures to protect CWS wastewater collection system from damage resulting from its operations. No construction debris or surface runoff shall be directed or otherwise accidentally allowed to discharge to the wastewater collection system due to failure to implement preventive measures, or failure to adequately plug out service laterals. Private plumbing connections to the CWS system that are cut pending reconnection shall be appropriately capped. Abandoned service connections shall be permanently plugged and inspected by CWS prior to backfilling.
- Any services that will be abandoned, or capped off from an existing or previous structure (including during any other phase of the project, whether pre-planned or otherwise) must be immediately brought to the attention of CWS WWC Department. CWS needs to record the exact location and means of abandonment. If applicable, the City of Charleston also has a process that is required for these services as they are abandoned within its right of way (ROW). The contractor must notify the City separately, and in addition to CWS.
- Where existing private plumbing connections to the CWS system are cut pending reconnection, the CWS service shall be appropriately temporarily capped. Abandoned service connections within the right-of-way or within CWS easements shall be permanently plugged at the easement/ROW boundary. Email to [WastewaterInspectors@charlestoncwp.com](mailto:WastewaterInspectors@charlestoncwp.com) to advise when abandoned services are ready for inspection by CWS prior to backfilling.
- The approved contractor completing the work must email to [WastewaterInspectors@charlestoncwp.com](mailto:WastewaterInspectors@charlestoncwp.com) to advise when work is scheduled to commence, and also schedule for an open trench inspection of proper abandonment of the existing sewer line at NH 16 D.1. CWS requires 72 hours-notice to perform the open trench inspection.

**DEMOLITION NOTES:**

- THE CONTRACTOR TO INSTALL ALL SILT FENCING & TREE BARRICADES BEFORE STARTING ANY WORK. CONTRACTOR IS RESPONSIBLE FOR EROSION CONTROL MEASURES. SEE EROSION CONTROL NOTES.
- CONTRACTOR SHALL CONTACT THE CITY OF CHARLESTON TRAFFIC AND TRANSPORTATION DEPARTMENT (LUCAS STOLTZ - (843)724-7371) PRIOR TO ANY CONSTRUCTION OR DEMOLITION TO COORDINATE AND DISCUSS STREET BLOCKINGS, PARKING METER SPACE DISRUPTION, PARKING METER REMOVAL AND REPLACEMENT, PARKING SPACE MARKING REMOVAL, REPLACEMENT OF PAVEMENT MARKINGS, AND INSTALLATION OF SIGNS.
- THE CONTRACTOR WILL BE RESPONSIBLE FOR ALL SWPPP INSPECTIONS, REPORTS, AS-BUILT DRAWINGS, MEETINGS, CERTIFICATIONS, AND NOTICE OF TERMINATION AS REQUIRED BY THE APPROVED NPDES PERMIT FOR STORMWATER DISCHARGE FROM LARGE AND SMALL CONSTRUCTION ACTIVITIES SC1010000 (2012 CQP) AND AS REQUIRED BY CITY OF CHARLESTON MS4.
- CONSIDERABLE EFFORT HAS BEEN MADE TO DETERMINE THE LOCATION OF UNDERGROUND UTILITIES. SOME LOCATIONS ARE ACTUAL FIELD MEASUREMENTS AND SOME ARE TAKEN FROM UTILITY RECORDS OR LOCATIONS MARKED IN THE FIELD BY THE VARIOUS UTILITY COMPANIES. THIS SURVEY DOES NOT WARRANT THAT UTILITIES ARE SHOWN ACCURATELY NOR THAT ALL UTILITIES ARE SHOWN. CALL PALMETTO UTILITY PROTECTION SERVICE (P.U.P.S.) AT 811 A MINIMUM OF 3 WORKING DAYS BEFORE DIGGING.
- ACCESS TO THE CONSTRUCTION SITE SHALL BE MAINTAINED DURING CONSTRUCTION.
- CONTRACTOR SHALL ENSURE THAT SITE DISTANCE VISIBILITY IS MAINTAINED IN ACCORDANCE WITH SCDDOT ARMS MANUAL AT ALL INTERSECTIONS AND CONSTRUCTION DRIVEWAYS DURING DEMOLITION. ALL CONSTRUCTION EGRESS/INGRESS POINTS SHALL PROVIDE PROPER TRAFFIC CONTROL FOR CONSTRUCTION DRIVEWAYS AT ALL TIMES DURING DEMOLITION.
- SEE SPECIFICATION SECTION 024113 FOR ADDITIONAL DEMOLITION NOTES.
- SEE ELECTRICAL PLANS FOR ALL ELECTRICAL WORK. SALVAGE LIGHTS AND RETURN TO 823 MEETING STREET.
- ANY CONTRACTOR DOING ANY WORK RELATED TO THE WASTEWATER INFRASTRUCTURE IN THE PUBLIC RIGHT OF WAY OR WITHIN A CWS EASEMENT MUST BE ON THE CWS APPROVED CONTRACTOR LIST.

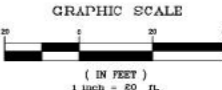
- 1 - Demolish\_Brick Wall 2' thk - Q1 180 SY
- 2 - Demolish\_Column 29"x29"x7' - Q1 37 CY
- 3 - Demolish\_Gate - Q1 2 EA
- 4 - Demolish Asphalt Pavement - Q1 107 SY
- 5 - Demolish\_Concrete Side Walk - Q1 1,353 SY
- 6 - Demolish\_Concrete Curb - Q1 53 LY
- 7 - Remove\_Wooden Post 6"x 6" - Q1 54 EA
- 8 - Remove\_Sign RDSGN - Q1 5 EA
- 9 - Remove & Return\_Blue Stone Walk - Q1 71 SY
- 10 - Remove & Return\_Flag Pole - Q1 1 EA
- 11 - Remove\_Trees 9" SYCM - Q1 4 EA
- 12 - Remove\_Trees 6" SYCM - Q1 4 EA
- 13 - Remove\_Trees 10" SYCM - Q1 2 EA
- 14 - Remove\_Trees 7" SYCM - Q1 4 EA
- 15 - Remove\_Trees 5" SYCM - Q1 1 EA
- 16 - Remove\_Trees 8" SYCM - Q1 3 EA
- 17 - Remove\_Trees 15" Palm - Q1 1 EA
- 18 - Remove\_Trees 12" Palm - Q1 1 EA
- 19 - Remove\_Trees 14" Palm - Q1 4 EA
- 20 - Remove & Return\_Granite Benches - Q1 7 EA
- 21 - Remove\_Trees CMTL - Q1 6 EA
- 22 - Remove\_Trees 12" SYCM - Q1 1 EA
- 23 - Demolish\_Drop Inlet - Q1 5 EA
- 24 - Demolish\_15" RCP Underground Storm Pipe - Q1 91 LY
- 25 - Remove\_Trees 12" O - Q1 1 EA
- 26 - Remove\_Trees 14" M - Q1 1 EA
- 27 - Remove\_Trees 12" B - Q1 1 EA
- 28 - Remove\_Trees 6" O - Q1 1 EA
- 29 - Remove\_Power Poles - Q1 1 EA
- 30 - Remove\_Bollards - Q1 4 EA
- 31 - Remove\_Monitoring Well - Q1 1 EA
- 32 - Remove & Relocate\_Electrical Underground Line - Q1 229 LY
- 33 - Remove\_SSMH (CPW MH 16D.6) - Q1 2 EA
- 34 - Remove\_LP - Q1 8 EA
- 35 - Remove & Replace\_4" Water Main - Q1 51 LY
- 36 - Relocate\_Hydrant, Standpipe & Valve - Q1 1 EA
- 37 - Remove\_Meter Taps2" - Q1 4 EA
- 38 - Remove\_8" PVC Service line - Q1 69 LY
- 39 - Remove & Relocate\_10" DIP - Q1 27 LY
- 40 - Remove & lower\_Drop Inlet - Q1 4 EA
- 41 - Demolish\_ICV - Q1 1 EA
- 42 - Remove & Relocate\_Electrical Panels - Q1 3 EA
- 43 - Remove & Relocate\_Transformer - Q1 1 EA
- 44 - TBM Chiselled Square in curb - Q1 1 EA
- 45 - Remove\_4" PVC Service line - Q1 30 LY
- 54 - Sawcut Asphalt - Q1 20 LY
- 98 - Site Clearing\_Existing Grass - Q1 2,265 SY
- 107 - Site Clearing - Q1 494 SY
- 111 - Site Clearing\_Existing Gravel Parking/Grass - Q1 7,506 SY



| LINE | LENGTH | BEARING     |
|------|--------|-------------|
| L1   | 17.90  | N82°22'30"E |
| L2   | 33.57  | N87°49'39"W |
| L3   | 5.84   | N83°22'27"E |
| L4   | 10.05  | N89°12'17"W |
| L5   | 15.57  | N87°09'45"W |
| L6   | 5.69   | N87°05'48"W |
| L7   | 35.14  | N83°37'04"E |
| L8   | 14.71  | S81°22'28"W |
| L9   | 25.71  | S86°41'09"W |
| L10  | 15.48  | N87°22'24"W |
| L11  | 43.33  | S81°19'24"W |
| L12  | 17.35  | S86°48'29"E |
| L13  | 76.03  | S85°02'27"E |
| L14  | 12.99  | N81°32'45"E |



The South Carolina 811 Line requires that excavators give a 72-hour notice. 13 working days including weekends and holidays. For the contractor to get out to work the next day after a street tree is cut, you must give the contractor a 72-hour notice. You will have to give the contractor a 72-hour notice to give the contractor a 72-hour notice. The contractor will be responsible for notifying the contractor. The contractor will be responsible for notifying the contractor. The contractor will be responsible for notifying the contractor.



International African American Museum  
14 Wharfside Street  
Charleston, SC 29401  
U.S.A.

- 55 - New 1.5" Asphalt Pavement - Q1 545 SY
- 56 - New 1.5" Binder - Q1 545 SY
- 57 - Bituminous Prime Coat - Q1 545 SY
- 58 - New 6" Base Course - Q1 91 CY
- 59 - Bituminous Tack Coat - Q1 545 SY
- 60 - Concrete Pavers\_Elizabeth city glass dark grey - Q1 3 SY
- 61 - Pavement Marking\_Stop Bar - Q1 3 SY
- 62 - C P\_Concrete 3000PSI-New Side Walk - Q1 8 CY
- 63 - Gravel Pavement-8" hk - Q1 531 SY
- 64 - Granite Curbs-6" - Q1 83 LY
- 65 - C P\_Concrete 4000PSI-bel Curb - Q1 13 CY
- 66 - Bricks or 2" x 2" Hardwood Hubs - Q1 53 EA
- 67 - New Parking Striping - Q1 93 LY
- 83 - Handicapped parking Sign - Q1 2 EA
- 112 - Reinforced Fire Lane Section-3" Topsoil - Q1 10 CY
- 113 - Reinforced Fire Lane Section-8" Base Course - Q1 28 CY

**SITE DATA:**

- 1) THE PROPERTY ADDRESS IS 14 WHARF SIDE STREET.
  - 2) TMS No. : 459-00-00-007, 171, 241-243.
  - 3) TOTAL AREA OF TRACTS = 2.53 ACRES
  - 4.) ZONED GD.
  - 5.) HEIGHT DISTRICT = 55/30.
  - 6.) BLDG HEIGHT: 46'9"
  - FIRST FLOOR ELEV.=26.33' (SEE ARCHITECTURAL)
  - 7.) PROPOSED BUILDING FOOTPRINTS = 34,900 S.F. = 0.80AC.
- B.) TRC SUBMITTAL DATES:**  
 PRE APP = 03/17/2016  
 1st SUBMITTAL = 03/16/2017  
 2nd SUBMITTAL =
- 9.) ACCORDING TO FEMA FLOOD INSURANCE RATE MAP 45019C0516J DATED NOVEMBER 17, 2004 THIS PROPERTY APPEARS TO BE IN ZONE VE 16 AND VE 17.
  - 10.) CAD FILES WILL BE PROVIDED TO SUCCESSFUL BIDDER FOR THEIR USE IN THE LAYOUT OF THE PROJECT.

**TRAFFIC & TRANSPORTATION NOTES:**

- 1.) ALL TRAFFIC CONTROL DEVICES WILL BE TO M.U.T.C.D. STANDARDS (MANUAL OF UNIFORM TRAFFIC CONTROL DEVICES).
- 2.) SIGHT DISTANCE VISIBILITY AT ALL EXITS AND INTERSECTIONS WILL BE MAINTAINED IN ACCORDANCE WITH SCDOT'S ACCESS AND ROADSIDE MANAGEMENT STANDARDS MANUAL.
- 3.) CONTACT THE CITY OF CHARLESTON TRAFFIC AND TRANSPORTATION DEPARTMENT (BELEN WELLS - (843) 724-3371) UPON COMPLETION OF SITE WORK FOR STRIPING OF PARKING WITHIN THE RIGHT-OF-WAY, INSTALLATION OF SIGNS, AND PARKING METER PLACEMENT.
- 4.) LANE CLOSURES OF ANY TYPE OR DURATION MUST BE APPROVED BY TRAFFIC AND TRANSPORTATION WELL IN ADVANCE OF THE OCCURRENCE. NO CONSTRUCTION PARKING OR STAGING WILL BE ALLOWED WITHIN THE RIGHT-OF-WAY WITHOUT PRIOR APPROVAL BY TRAFFIC & TRANSPORTATION.
- 5.) A TRAFFIC STUDY FOR PROPOSED PLAN HAS BEEN PROVIDED WITH TRC SUBMITTAL.
- 6.) PLEASE SEE CITY OF CHARLESTON TRAFFIC & STREET NAME SIGN STANDARDS ON DETAILS SHEETS.
- 7.) ALL NEW STRIPING SHALL BE THERMOPLASTIC.
- 8.) LANE CLOSURES OF ANY TYPE OR DURATION MUST BE APPROVED BY TRAFFIC AND TRANSPORTATION WELL IN ADVANCE OF THE OCCURRENCE. NO CONSTRUCTION PARKING OR STAGING WILL BE ALLOWED WITHIN THE RIGHT-OF-WAY WITHOUT PRIOR APPROVAL BY TRAFFIC AND TRANSPORTATION. CONTACT LEE KLECKLEY, TRAFFIC SAFETY INSPECTOR AT (843) 724-7380 OR KLECKLEY@CHARLESTON-SC.GOV TO DISCUSS THESE POTENTIAL ISSUES IF WARRANTED. TRC APPROVAL DOES NOT GUARANTEE LANE CLOSURE APPROVAL.
- 9.) REMOVAL OR CHANGES TO PARKING METERS AND/OR PARKING METERED SPACES OR OTHER ON-STREET PARKING MUST BE SHOWN ON THE PLANS AND COORDINATED WITH TRAFFIC AND TRANSPORTATION OUTSIDE THE TRC PROCESS BUT PRIOR TO RECEIVING TRC APPROVAL. CONTACT ROBERT SOMERVILLE, (843) 724-7373.

**SPECIAL R/W NOTES FOR SCDOT PROJECTS:**

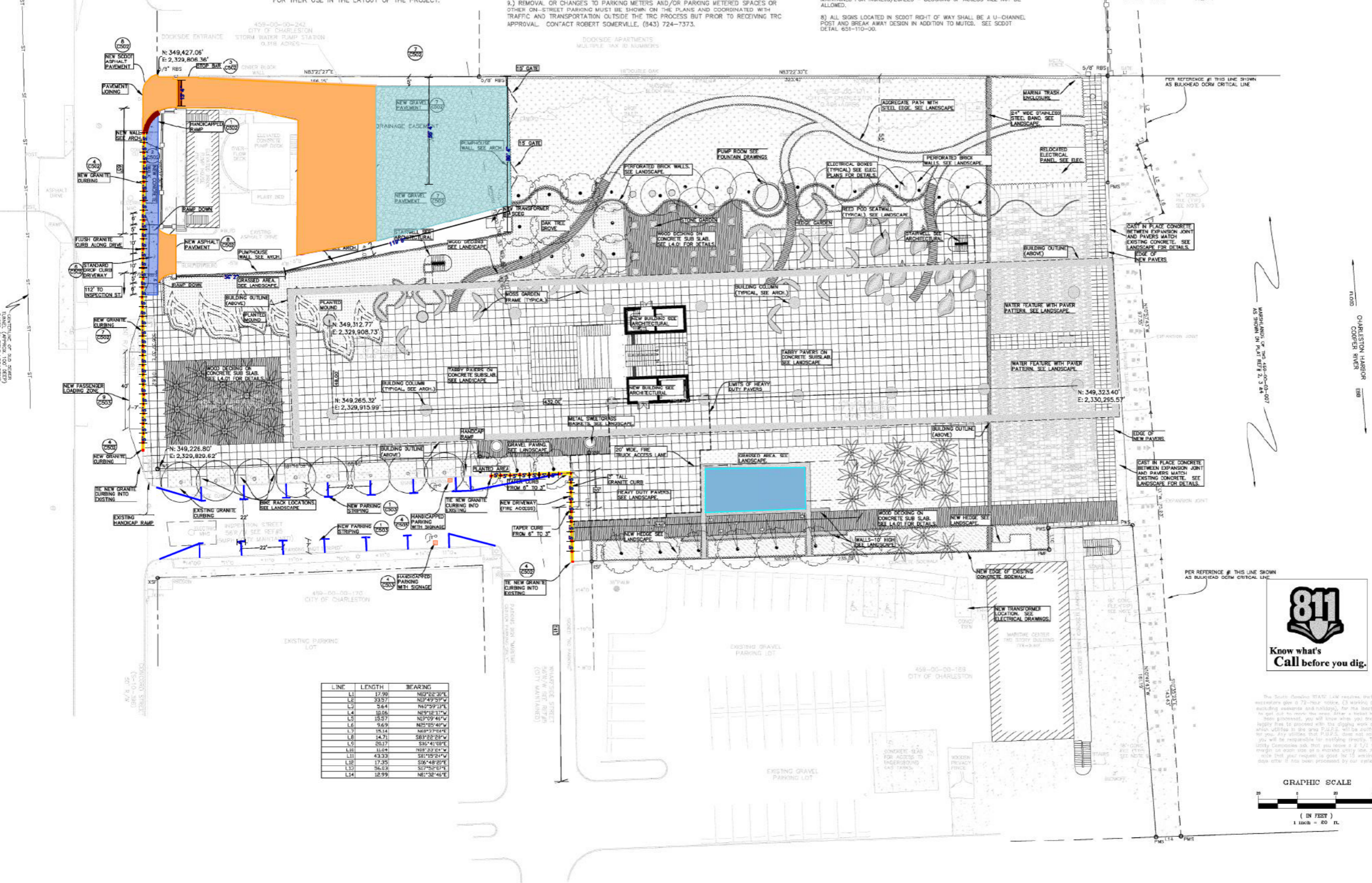
- 1) CONTRACTOR TO REFER TO THE MOST CURRENT EDITION OF THE SCDOT STANDARD DRAWINGS TO MAKE SURE THAT THE DETAILS SHOWN HEREON ARE THE MOST CURRENT SCDOT DETAILS.
- 2) ANY FIELD CHANGES WITHIN SCDOT R/W OR CHANGES THAT WOULD IMPACT SCDOT R/W WILL REQUIRE WRITTEN SCDOT APPROVAL PRIOR TO CHANGES BEING IMPLEMENTED IN THE FIELD. (E.G. DRAINAGE, GRADING, ACCESS DESIGN ETC.)
- 3) SCDOT WILL REQUIRE THAT YOU PROVIDE A TRAFFIC CONTROL PLAN (PHASED AS NECESSARY) FOR REVIEW AND APPROVAL.
- 4) UTILITY COMPANIES MUST SUBMIT UTILITY ENCROACHMENTS UNDER SEPARATE PERMITS FOR NEW CONNECTIONS OR RELOCATION OF EXISTING SERVICES. NO UTILITY WORK CAN BEGIN WITHIN THE R/W WITHOUT AN APPROVED SCDOT ENCROACHMENT PERMIT FOR EACH UTILITY. SCDOT WILL NOT ALLOW AN OPEN CUT OF A STATE ROAD IF IT WAS RECENTLY RESURFACED.
- 5) ALL PIPS INSTALLATIONS WITHIN SCDOT RIGHT OF WAY TO MEET CURRENT SCDOT BACKFILL AND COMPACTIVE STANDARDS (SEE SCDOT STANDARD DRAWINGS SECTION 714-000).
- 6) THE DETAILS SHOWN ON THIS PLAN ARE FOR REFERENCE ONLY. FULL SIZE DETAILS ARE AVAILABLE ON THE SCDOT WEBSITE AT [http://www.scdot.org/doing/sd\\_Book.aspx](http://www.scdot.org/doing/sd_Book.aspx)
- 7) THE OWNER SHALL BE RESPONSIBLE FOR THE MAINTENANCE OF DRIVEWAYS AND OTHER ACCESS POINTS, INCLUDING ANY DRAINAGE STRUCTURES, FOR AREAS WITHIN THE RIGHTS-OF-WAYS OF STATE MAINTAINED FACILITIES IN PERPETUITY. DRIVEWAY ACCESS SHALL BE MAINTAINED FOR INGRESS/EGRESSES - BLOCKING OF ACCESS WILL NOT BE ALLOWED.
- 8) ALL SIGNS LOCATED IN SCDOT RIGHT OF WAY SHALL BE A U-CHANNEL POST AND BREAK AWAY DESIGN IN ADDITION TO MUTCD. SEE SCDOT DETAIL 651-110-00.

**PARKING ANALYSIS:**

**PARKING REQUIRED:**  
 MUSEUM SPACE - 1 PER 600 SF  
 MAIN LEVEL - 33,551 GSF  
 SUITE LEVEL - 5,158 GSF  
 TOTAL = 38,709 GSF  
 38,709 SF/600 = 64.5 = 65 SPACES REQUIRED.  
 REQUIRED PARKING WILL BE PROVIDED WITH A LONG TERM LEASE OF PARKING SPACES IN THE AQUARIUM GARAGE.

**MUTCD 2009**

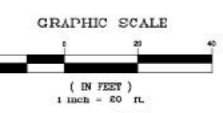
- STOP SIGN - R1-1
- NO PARKING - R8-3 W/ R7 201P
- SPEED LIMIT - R2-1



International African American Museum  
 14 Wharfside Street  
 Charleston, SC 29401  
 U.S.A.



The South Carolina 811® law requires that excavators give a 72-hour notice, (3 working days) to utility owners and installers. For the location to get data to work the meter, there is a meter hole. When provided, you will know when you're ready to dig. The original work and which utility in the area 811® will be notifying you. 811® provides that 811® does not verify you will be responsible for notifying utility. The utility companies ask that you know a 2 1/2" hole depth on every size of a excavator utility pole. Also note that your request is good for 15 working days after it has been processed by our system.



- 80 - New Storm Drain Pipe-8" HDPE/PVC - Q1 98 LY
- 84 - New Storm Drain Pipe-15" HDPE - Q1 42 LY
- 85 - New Storm Drain Pipe-18" PVC - Q1 65 LY
- 86 - New Storm Drain Pipe-10" HDPE - Q1 13 LY
- 87 - New Water Main-4" - Q1 96 LY
- 88 - New Domestic Water Line-3" - Q1 74 LY
- 89 - New Fire Service Line-6" - Q1 60 LY
- 91 - New Sanitary Sewer Service-4" - Q1 59 LY
- 92 - 4" x 3" Reducer - Q1 1 EA
- 93 - 2" Water Meter Vault - Q1 1 EA
- 94 - New SSCO-24" Round Concrete Collar - Q1 5 EA
- 95 - Trench Drain bel wood decking - Q1 26 LY
- 96 - New Stand Pipe - Q1 2 EA
- 97 - New Drop Inlet-4'x4' - Q1 2 EA
- 99 - New Water Quality Device - Q1 1 EA
- 100 - New Junction Box-4'x4' - Q1 1 EA
- 101 - Tapping Sleeve & Valve -8"x4" - Q1 2 EA
- 102 - FDC-New Fire Supply line - Q1 283 LY
- 103 - FDC Sign - Q1 1 EA
- 104 - New SDCO - Q1 3 EA
- 105 - New LD - Q1 11 EA
- 106 - 4" Water Meter Vault - Q1 1 EA
- 108 - New CWS Water Easement Line - Q1 19 LY
- 109 - Existing drain to be modified - Q1 1 EA
- 110 - New 2" Blow Off - Q1 1 EA

**GRADING NOTES:**

- 1) NEW STORM DRAINAGE AND SANITARY SEWER LINES SHALL BE LAID UP-GRADE AFTER CONFIRMATION OF EXISTING INVERT ELEVATIONS.
- 2) SEE SHEET C1.1 FOR SWPPP PHASING AND SEQUENCE OF CONSTRUCTION NOTES.
- 3) SEE LANDSCAPE PLANS AND TREE LOCATIONS & HARDSCAPE LAYOUT.
- 4) SEE SHEET C5.5 FOR SEWER NOTES.
- 5) SEE SHEET C5.6 FOR WATER SYSTEM NOTES.
- 6) ALL WORK INVOLVING CPW'S LINES AND STRUCTURES SHALL BE DONE BY A CONTRACTOR FROM CPW'S "APPROVED CONTRACTORS" LIST.
- 7) CONTRACTOR SHALL EXCAVATE EXISTING SANITARY SEWER LINE TO CONFIRM LOCATION & DEPTH.
- 8) SIDEWALKS ARE TO BE ENTIRELY BROOM FINISHED.
- 9) SEE ARCHITECTURAL PLANS FOR FINAL BUILDING DIMENSIONS AND LAYOUT.
- 10) CONTRACTOR IS RESPONSIBLE OF ALL SWPPP AS-BUILTS.

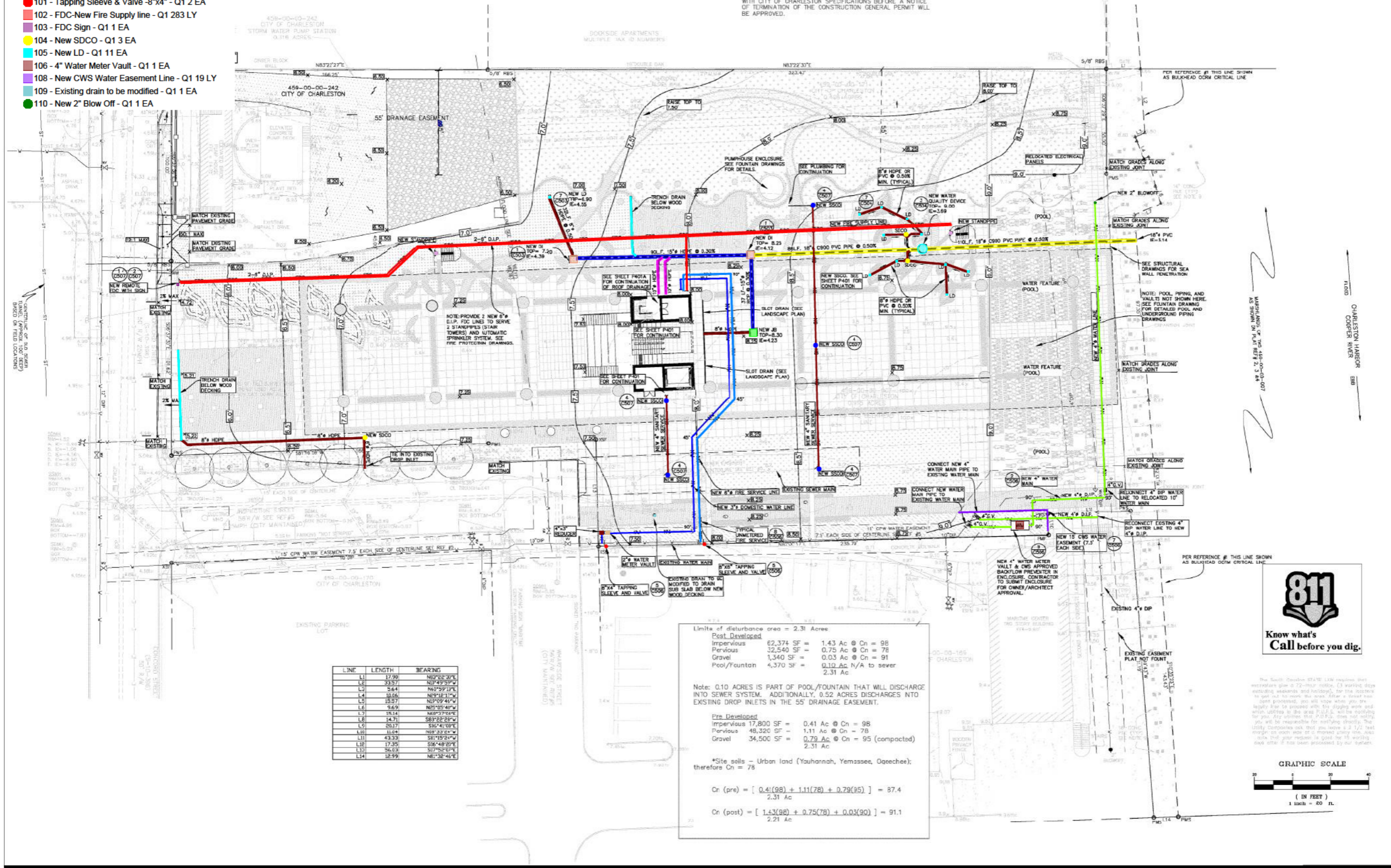
- 11) EXISTING AND NEW SSMH, WM, WV, DRAINAGE, FIRE HYDRANTS, ETC. MUST BE ADJUSTED TO FINAL FINISHED GRADES. MINOR ADJUSTMENT MAY BE NECESSARY.
- 12) THE GENERAL CONTRACTOR(G.C.) SHALL COORDINATE ALL WORK SUCH THAT ALL SANITARY, POTABLE WATER, & FIRE LINES ARE CONNECTED AND TESTED AS REQUIRED FOR A COMPLETED PROJECT. THE FIRE SUPPLY LINE AND ANY/ALL ELEMENTS OF THE FIRE SYSTEM SUCH AS REMOTE FDC SHALL BE IN ACCORDANCE WITH ALL CURRENT CODES AND SHALL BE CERTIFIED AND TESTED AS REQUIRED BY THE G.C. OR OTHER PROFESSIONALS WORKING FOR THE G.C. THE CIVIL ENGINEER WILL PROVIDE A FIRE SPRINKLER SPECIFICATION SHEET FOR THE SUPPLY LINE FROM THE MAIN TO WITHIN 5' OF THE BUILDING. THE SUPPLY LINE SHALL BE TESTED AS REQUIRED UNDER SPEC SECTION 331100. THE CIVIL ENGINEER DOES NOT SPECIFY OR DESIGN ANY ELEMENTS OF THE FIRE CONTROL SYSTEM. ALL PORTIONS OF THE SUPPLY LINE & FIRE SYSTEM SHALL BE TESTED BY THE G.C. AND CERTIFIED IN ACCORDANCE WITH NFPA 24 AND LATEST VERSION OF THE IBC.
- 13) PRIOR TO PAVING, CONTRACTOR SHALL VERIFY THAT FIRE GRADED BASE COURSE MEETS REQUIRED GRADES SUCH AS TO AVOID "BRD BATH" AREAS ON FINAL PAVEMENT.
- 14) COVENANTS OF PERMANENT MAINTENANCE OF STORMWATER FACILITIES FORM AND AS-BUILT DRAWINGS FOR STORMWATER MANAGEMENT FACILITIES MUST BE COMPLETED IN ACCORDANCE WITH CITY OF CHARLESTON SPECIFICATIONS BEFORE A NOTICE OF TERMINATION OF THE CONSTRUCTION GENERAL PERMIT WILL BE APPROVED.

**FIRE SPRINKLER NOTES:**

- FIRE FLOW PERFORMED BY CHARLESTON WATER SYSTEMS ON
1. a. AVAILABLE FIRE FLOW AT SITE = Q(20) = 2227 GPM  
 STATIC PRESSURE = 43 PSI  
 RESIDUAL PRESSURE = 34 PSI W/ FLOW = 1342 GPM
  - b. FIRE FLOW DEMAND FOR BUILDING = xx PSI W/ FLOW xxxx GPM

**GRADING, DRAINAGE, & UTILITY LEGEND:**

- (7.60) - FINISHED GRADE ELEVATION
- DRAINAGE DIRECTIONAL ARROW
- DI - DROP INLET
- HDPE - HIGH DENSITY POLYETHYLENE PIPE
- RCP - REINFORCED CONCRETE PIPE
- CO - STORM CLEAN OUT
- NEW STORM DRAIN PIPE
- STORM DRAINAGE TO BE LOCATED BY OTHERS
- NEW SANITARY SEWER GRAVITY
- NEW POTABLE WATER



| LINE | LENGTH | BEARING     |
|------|--------|-------------|
| L1   | 17.90  | N83°22'30"E |
| L2   | 33.57  | N87°49'39"W |
| L3   | 5.84   | N82°52'23"E |
| L4   | 10.05  | N89°18'17"W |
| L5   | 15.57  | N87°09'41"W |
| L6   | 9.69   | N87°05'48"W |
| L7   | 15.14  | N89°37'04"E |
| L8   | 14.71  | S81°22'28"W |
| L9   | 25.17  | S86°41'01"W |
| L10  | 11.48  | N88°23'04"W |
| L11  | 43.33  | S81°15'24"W |
| L12  | 17.35  | S86°48'29"E |
| L13  | 16.03  | S87°02'27"E |
| L14  | 12.99  | N81°32'45"E |

Limits of disturbance area = 2.31 Acres

| Category                     | Area (SF) | Area (Ac)      | Cn           |
|------------------------------|-----------|----------------|--------------|
| Post-Developed Impervious    | 62,374 SF | 1.43 Ac        | 98           |
| Post-Developed Pervious      | 32,540 SF | 0.75 Ac        | 78           |
| Post-Developed Gravel        | 1,340 SF  | 0.03 Ac        | 91           |
| Post-Developed Pool/Fountain | 4,370 SF  | 0.10 Ac        | N/A to sewer |
| <b>Total</b>                 |           | <b>2.31 Ac</b> |              |

Note: 0.10 ACRES IS PART OF POOL/FOUNTAIN THAT WILL DISCHARGE INTO SEWER SYSTEM. ADDITIONALLY, 0.52 ACRES DISCHARGES INTO EXISTING DROP INLETS IN THE 55' DRAINAGE EASEMENT.

Pre-Developed

| Category                 | Area (SF) | Area (Ac)      | Cn             |
|--------------------------|-----------|----------------|----------------|
| Pre-Developed Impervious | 17,800 SF | 0.41 Ac        | 98             |
| Pre-Developed Pervious   | 48,320 SF | 1.11 Ac        | 78             |
| Pre-Developed Gravel     | 34,500 SF | 0.79 Ac        | 95 (compacted) |
| <b>Total</b>             |           | <b>2.31 Ac</b> |                |

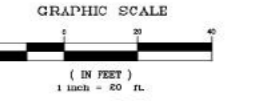
\*Site soils - Urban land (Yauhanah, Yemassee, Ogeechee); therefore Cn = 78

$$Cn (pre) = [ 0.41(98) + 1.11(78) + 0.79(95) ] = 87.4$$

$$Cn (post) = [ 1.43(98) + 0.75(78) + 0.03(90) ] = 91.1$$



The South Carolina 811® Line requires that excavators give a 72-hour notice. (3 working days excluding weekends and holidays). For the contractor to get out to work the next day, a street view permit is required. You will have to give the utility companies a 72-hour notice. The utility companies will be notified by the contractor. The utility companies will be notified by the contractor. The utility companies will be notified by the contractor.



- 114 - Paving - P1 - Q1 33,641 SF
- 115 - Paving - P1-AHD - Q1 3,647 SF
- 116 - Paving - P2 - Q1 8,422 SF
- 117 - Paving - P3 - Q1 1,433 SF
- 118 - Paving - P4 - Q1 365 SF
- 119 - Paving - P5 - Q1 1,920 SF
- 120 - Paving - P6 - Q1 1,835 SF
- 122 - Paving - Precast Concrete Tile - Q1 6,409 SF
- 123 - Ornamental Grass - Q1 36,023 SF
- 124 - Paving - Asphalt - Q1 4,390 SF
- 125 - Paving - Gravel - Q1 4,782 SF

**GRADING NOTES:**

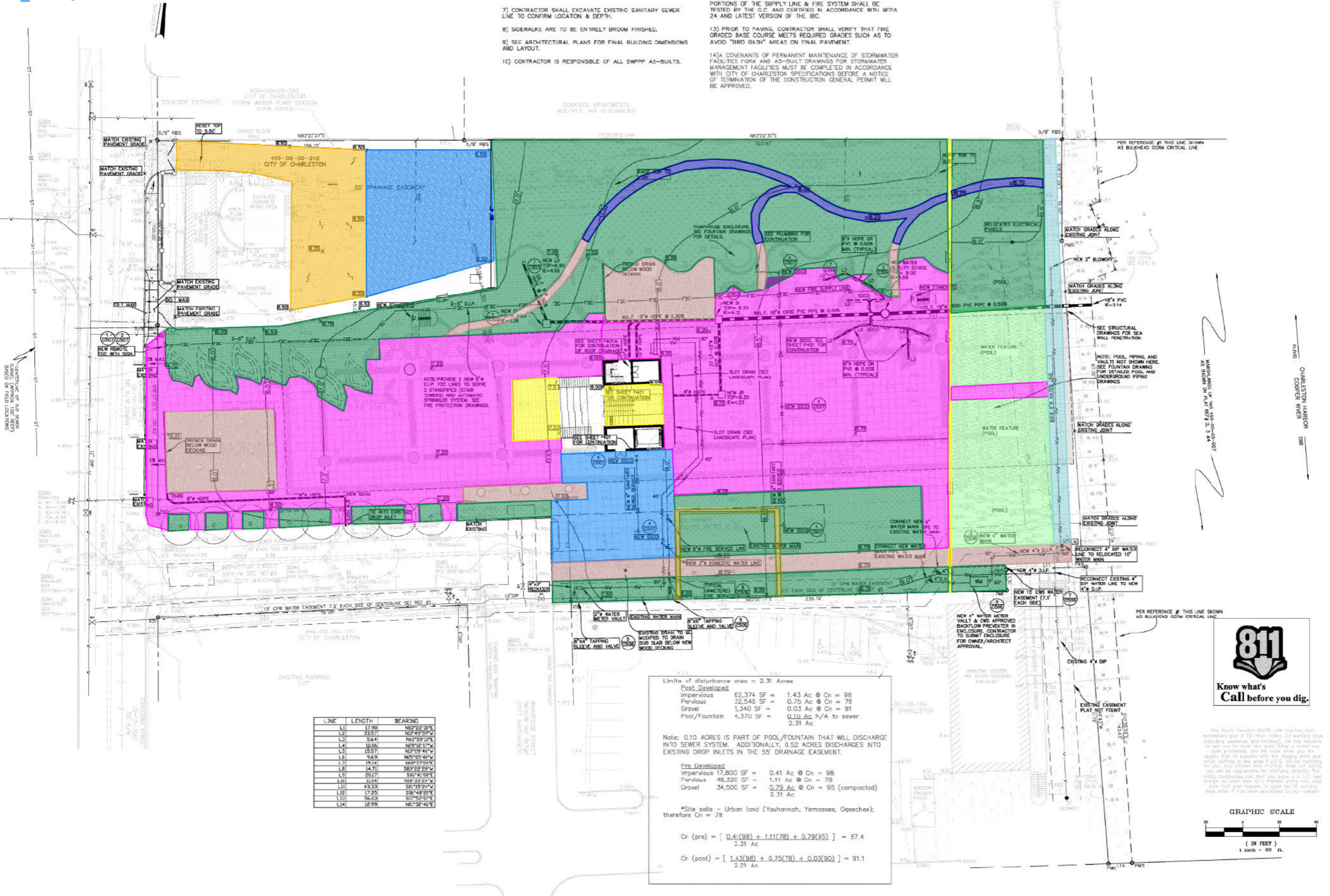
- 1) NEW STORM DRAINAGE AND SANITARY SEWER LINES SHALL BE LAID UPGRADE AFTER CONFIRMATION OF EXISTING INVERT ELEVATIONS.
- 2) SEE SHEET C1.1 FOR SWPPP PHASING AND SEQUENCE OF CONSTRUCTION NOTES.
- 3) SEE LANDSCAPE PLANS AND TREE LOCATIONS & HARDSCAPE LAYOUT.
- 4) SEE SHEET C5.5 FOR SEWER NOTES.
- 5) SEE SHEET C5.6 FOR WATER SYSTEM NOTES.
- 6) ALL WORK INVOLVING CPW'S LINES AND STRUCTURES SHALL BE DONE BY A CONTRACTOR FROM CPW'S "APPROVED CONTRACTORS" LIST.
- 7) CONTRACTOR SHALL EXCAVATE EXISTING SANITARY SEWER LINE TO CONFIRM LOCATION & DEPTH.
- 8) SIDEWALKS ARE TO BE ENTIRELY BROOM FINISHED.
- 9) SEE ARCHITECTURAL PLANS FOR FINAL BUILDING DIMENSIONS AND LAYOUT.
- 10) CONTRACTOR IS RESPONSIBLE OF ALL SWPPP AS-BUILTS.

**FIRE SPRINKLER NOTES:**

- FIRE FLOW PERFORMED BY CHARLESTON WATER SYSTEMS ON
1. a. AVAILABLE FIRE FLOW AT SITE = Q(20) = 2227 GPM  
 STATIC PRESSURE = 43 PSI  
 RESIDUAL PRESSURE = 34 PSI W/ FLOW = 1342 GPM
  - b. FIRE FLOW DEMAND FOR BUILDING = xx PSI W/ FLOW xxxx GPM

**GRADING, DRAINAGE, & UTILITY LEGEND:**

- (7.60) FINISHED GRADE ELEVATION
- DRAINAGE DIRECTIONAL ARROW
- DI DROP INLET
- HUPE HIGH DENSITY POLYETHYLENE PIPE
- RCP REINFORCED CONCRETE PIPE
- SC STORM CLEAN OUT
- SD NEW STORM DRAIN PIPE
- SDM STORM DRAINAGE TO BE LOCATED BY OTHERS
- SS NEW SANITARY SEWER GRAVITY
- SP NEW POTABLE WATER



| LINE | LENGTH | BEARING       |
|------|--------|---------------|
| L1   | 17.90  | N89°28'30\"/> |
| L2   | 33.57  | N87°49'39\"/> |
| L3   | 5.84   | N82°52'37\"/> |
| L4   | 10.05  | N89°18'17\"/> |
| L5   | 15.57  | N87°09'41\"/> |
| L6   | 9.69   | N87°05'49\"/> |
| L7   | 15.14  | N89°37'04\"/> |
| L8   | 14.71  | S81°22'28\"/> |
| L9   | 25.17  | S86°41'09\"/> |
| L10  | 11.48  | N88°28'04\"/> |
| L11  | 43.33  | S81°19'24\"/> |
| L12  | 17.35  | S86°48'29\"/> |
| L13  | 76.03  | S87°02'27\"/> |
| L14  | 12.99  | N81°32'45\"/> |

Limits of disturbance area = 2.31 Acres

|                |                                 |
|----------------|---------------------------------|
| Post-Developed |                                 |
| Impervious     | 62,374 SF = 1.43 Ac @ Cn = 98   |
| Pervious       | 32,540 SF = 0.75 Ac @ Cn = 78   |
| Gravel         | 1,340 SF = 0.03 Ac @ Cn = 91    |
| Pool/Fountain  | 4,370 SF = 0.10 Ac N/A to sewer |
|                | 2.31 Ac                         |

Note: 0.10 ACRES IS PART OF POOL/FOUNTAIN THAT WILL DISCHARGE INTO SEWER SYSTEM. ADDITIONALLY, 0.52 ACRES DISCHARGES INTO EXISTING DROP INLETS IN THE 55' DRAINAGE EASEMENT.

Pre-Developed

|            |   |
|------------|---|
| Impervious | 17,800 SF = 0.41 Ac @ Cn = 98             |
| Pervious   | 48,320 SF = 1.11 Ac @ Cn = 78             |
| Gravel     | 34,500 SF = 0.79 Ac @ Cn = 95 (compacted) |
|            | 2.31 Ac                                   |

\*Site soils - Urban land (Yahannah, Yemassee, Ogeechee); therefore Cn = 78

$$Cn (pre) = [ 0.41(98) + 1.11(78) + 0.79(95) ] = 87.4$$

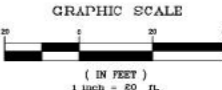
2.31 Ac

$$Cn (post) = [ 1.43(98) + 0.75(78) + 0.03(90) ] = 91.1$$

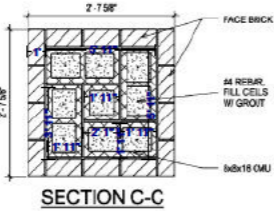
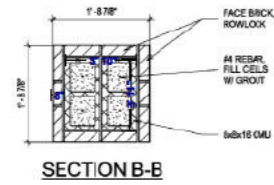
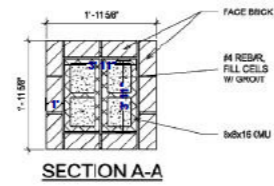
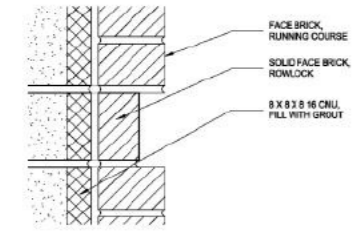
2.31 Ac



The South Carolina 811® Line requires that excavators give a 72-hour notice. (3 working days excluding weekends and holidays). For the contractor to get out to work the next day, a 48-hour notice is preferred. You will know when you are likely to be prepared with the digging work and when utilities in the area (U.S.A.) will be notifying you. (24 hours prior to 7:00 P.M.) Please call 811. You will be responsible for notifying directly. The utility companies ask that you know a 2 1/2' test depth on each side of a marked utility line. Also, ask the utility company to mark the 15' working area after it has been processed by you.



- 69 - CIP\_Concrete Pump House Footing 2'8" x 1ft - Q1 6 CY
- 70 - CIP\_Concrete Pump House Footing 3'4"x1'ht - Q1 3 CY
- 71 - CMU\_8x8x16 Fill with grout - Q1 3 CY
- 72 - CMU\_8x8x16 Fill with grout - Q1 3 CY
- 73 - Face Brick-Top - Q1 24 SY
- 74 - CMU\_8x8x16 Fill with grout - Q1 6 CY
- 75 - Face Brick-2'8" ht - Q1 22 SY
- 76 - Face Brick-6'ht - Q1 35 SY
- 77 - Grout-Slope - Q1 0 CY
- 78 - Face Brick-2'ht - Q1 27 SY
- 79 - Fence-Pump House Front Wall - Q1 20 LY
- 81 - Formwork\_Footing - Q1 21 SY



7 BRICK PIER SECTIONS  
3/4" = 1'-0"

