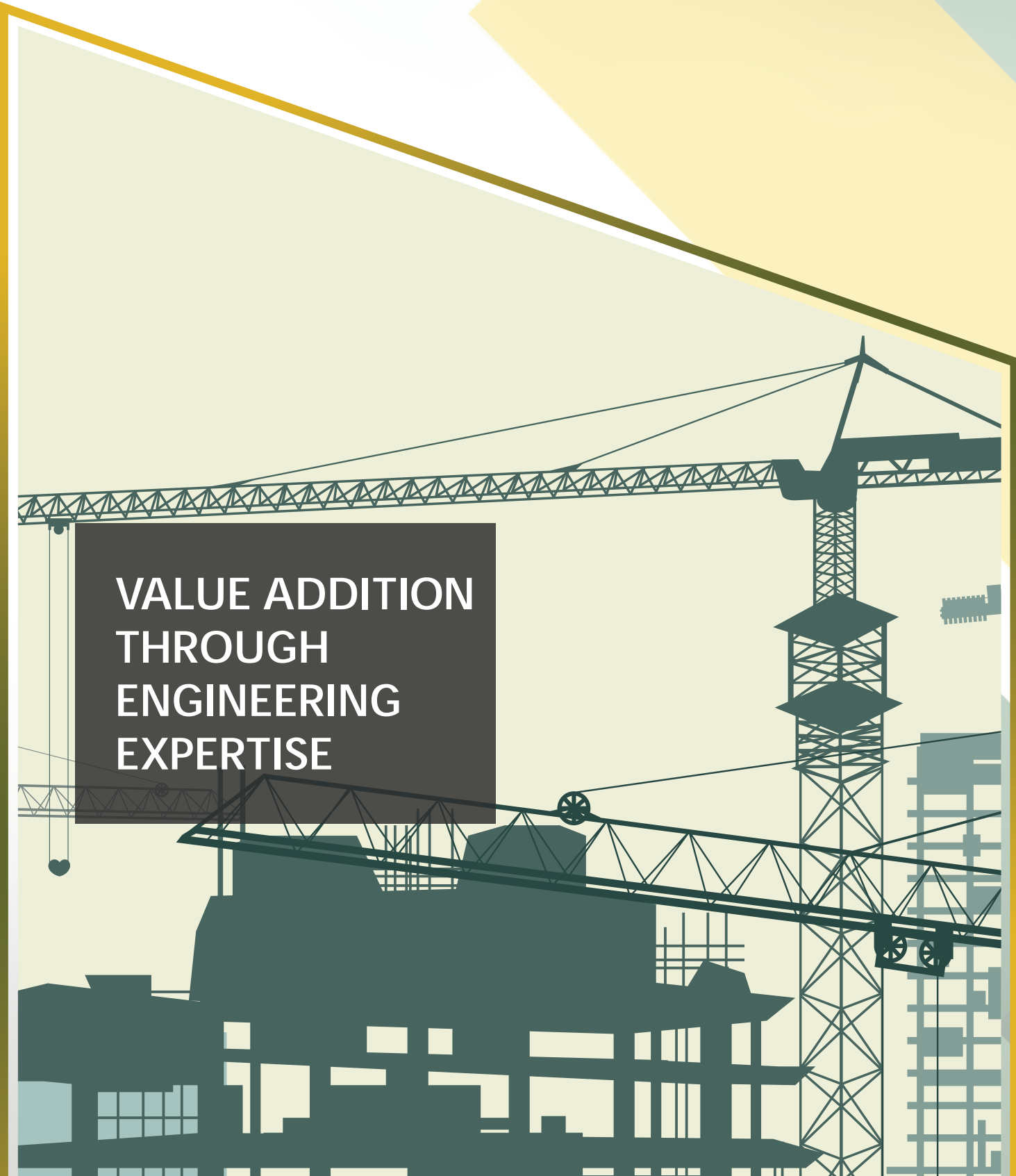




ISO 9001:2015 CERTIFIED

A stylized illustration of a construction site. It features a large tower crane on the right, a long horizontal crane arm extending across the middle, and the skeletal framework of a building under construction at the bottom. The background is a light green and yellow gradient. A dark grey rectangular box is overlaid on the left side of the illustration, containing the main text.

VALUE ADDITION  
THROUGH  
ENGINEERING  
EXPERTISE

Version: V1\_29\_04\_2026

ENGINEERING

TALENT

PROJECT MANAGEMENT

ADVISORY



**Late. Jagdish Raje**  
(Founding Director, GEM Engserv Pvt Ltd.)

Jagdish had a vision of making GEM Engserv as **“The Engineering Consultant of Choice”** to our clients and to provide meaningful, professional and dignified employment to many.

## OUR MANAGEMENT: HANDS ON APPROACH



**Shashank Vaidya, Director**

Shashank is an alumnus of IIT Madras, with Gold Medal in M.Tech. (Structure). He has over 4 decades of experience in Bridge Engineering, Quality Management, Training, Concrete Technology and Managing large construction contracts. He was a certified Lead Auditor of ISO 9001 and was conferred with Lifetime Achievement Award 2019 by the Indian Concrete Institute.

**Dr. Mohana Raje LLM, Ph.D., Director**

Mohana is a Ph.D. in “Alternative Dispute Resolution with respect to Civil Engineering Contracts in India”. She was a practicing Advocate with expertise in contracts law and a faculty of Business Laws.



**Sanjiv Anand, Chief Operating Officer**

Sanjiv is an alumnus of VNIT Nagpur, with B.Tech. in Civil Engineering and a certified Project Management Professional from SP Jain Institute of Management & Research. He has close to 4 decades of experience in Construction Management, Business Development and Contracts Administration.

## LEADERSHIP TEAM



Shailesh Mirkar

PROJECT MANAGEMENT CONSULTANCY



Ranjit Patil

EXPERT ADVISORY SERVICE & SPECIAL INITIATIVES



Pranita Kale

QS & COST CONSULTANCY



Dhawal Vaidya

DIGITAL SOLUTIONS



Mazhar Khan

QUALITY MANAGEMENT



Pramod Patil

REBAR DETAILING



Haresh Bamnalikar

TALENT ACQUISITION



Sanjay Singh

SAFETY MANAGEMENT

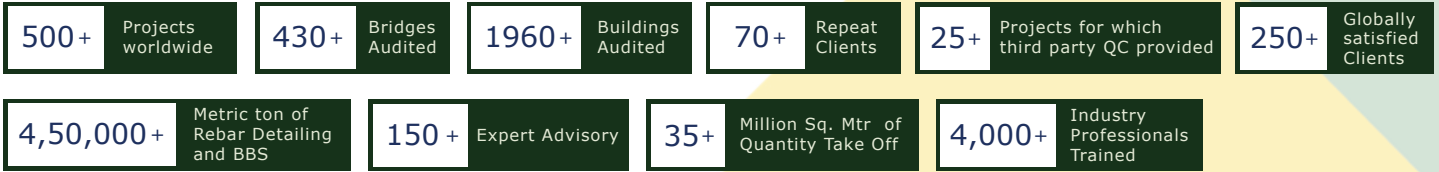


Sanil Naik

STRUCTURAL ENGINEERING

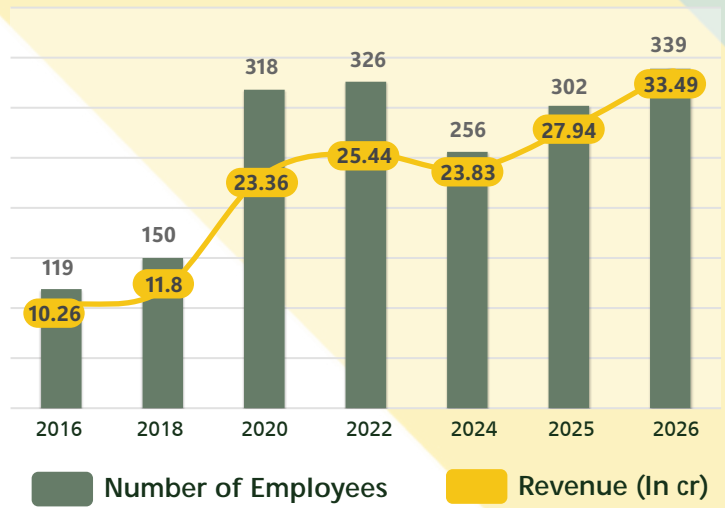
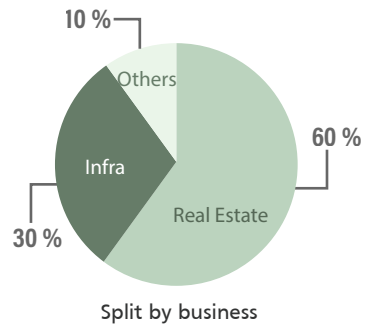
# CONSISTENT GROWTH

Operational since 2009, GEM Engserv Pvt Ltd has grown rapidly as an Engineering & Management Service Provider to the construction industry.

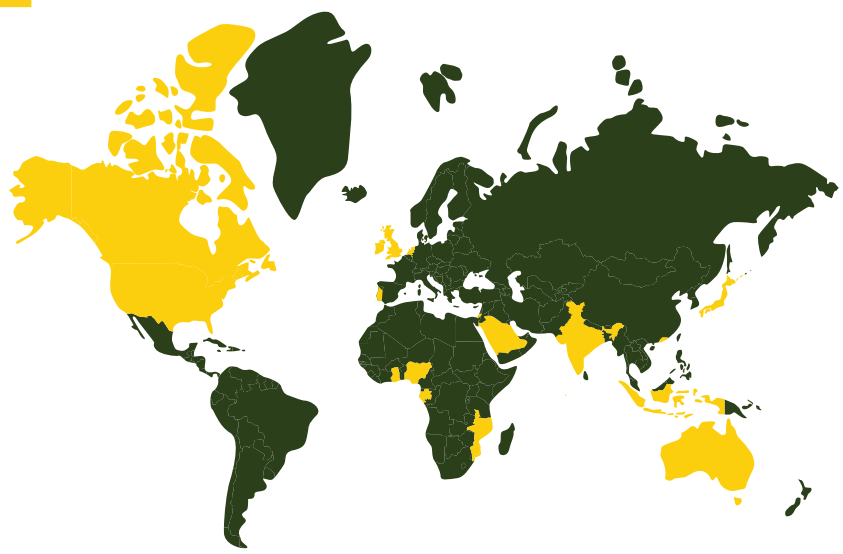


## FY 2025 - 2026

Revenue : Rs 33.49 cr  
 Number of Employees : 339



# CLIENTS ACROSS THE GLOBE



- GEOGRAPHY SERVED**
- ▶ United States
  - ▶ Canada
  - ▶ United Kingdom
  - ▶ Ireland
  - ▶ Australia
  - ▶ Singapore
  - ▶ India
  - ▶ UAE
  - ▶ Indonesia
  - ▶ Nigeria
  - ▶ Saudi Arabia
  - ▶ Gabon
  - ▶ Ghana
  - ▶ Mozambique
  - ▶ Malawi
  - ▶ Israel
  - ▶ Hongkong
  - ▶ Japan
  - ▶ Portugal
  - ▶ Netherlands

# WHY US?

Engineers of GEM Engserv strive to complete assignments on scheduled time, within budgeted cost, as per specified quality, with minimum wastage and in safe working conditions.

- Complete in-house competence
- Ownership & accountability
- In-House recruitment
- Technology driven systems
- Expert advice from top management
- Optimal cost structure
- Passionate about quality
- Culture of "No Compromise"
- ISO 9001:2015 Certified
- Technocrat-Managed Organization
- Keen to undertake challenges
- Focus on Value Engineering

# FEATURED PROJECTS

## REAL ESTATE

Godrej Two, Mumbai



Agarwal One, Indore



Godrej Trees, Mumbai



Vikas 11, Mumbai



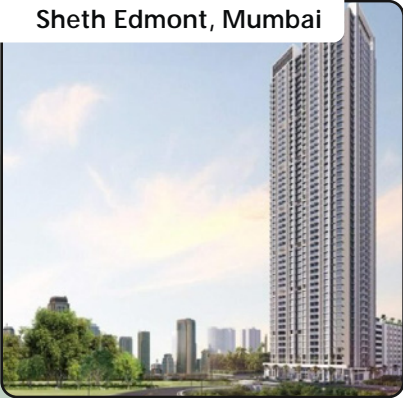
Suryanagari One Avenue, Mumbai



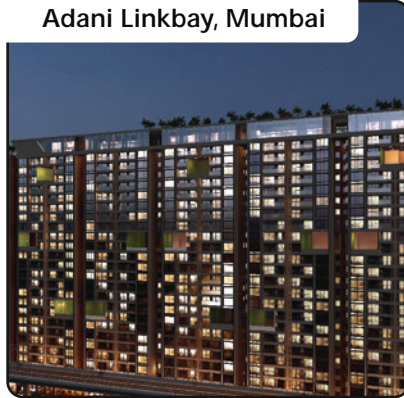
AKDN Twin Tower, Mumbai



Sheth Edmont, Mumbai



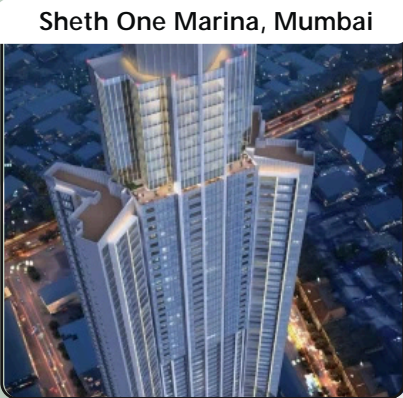
Adani Linkbay, Mumbai



Empire Centrum, Mumbai



Sheth One Marina, Mumbai



Adani X BKC, Mumbai



Fairfield by Marriott, Belgaum



# FEATURED PROJECTS

## INFRASTRUCTURE

HCC Metro Line 3, Mumbai



MTHL Atal Setu, Mumbai



Battersea, London



Metro, Dubai



Metro, Singapore



Nuclear Power Plant, Kaiga



Expressway, Kanpur - Lucknow



Technip Energies, UK



Monapo Bridge, Malawi



High Speed Rail, Mumbai - Ahmedabad



KRCL, India's Western Coast



RVNL Power Plant, Buxar



# FEATURED PROJECTS

## INDUSTRIAL

Indospace, South India



Siddharth Grease, Raigad



Jai Jogeshwari, Mumbai



Vardhaman, North India



Tata Power, Trombay



Hydro Power Plant, Bhivpuri



FOR ENQUIRY:



[www.gemengserv.com](http://www.gemengserv.com)

### REGISTERED OFFICE:



GEM Engserv Private Ltd, A-103, The Great Eastern Chambers, Plot No. 28, Sector - 11, CBD Belapur, Navi Mumbai 400614



GEM Engserv Pvt Ltd, Rama Towers, 5th Floor, 52, Bellary Rd, next to Baptist Hospital, Vinayakanagar, Hebbal, Bengaluru, Karnataka 560024

Shashikant Zarekar ( Sr. Brand Manager )



+91 77770 16824 | ✉ [business@gemengserv.com](mailto:business@gemengserv.com)

Dhawal Vaidya ( VP Commercial )



+91 954555424 | ✉ [dhawal.vaidya@gemengserv.com](mailto:dhawal.vaidya@gemengserv.com)

## ★ ★ ★ CLIENT FEEDBACK & TESTIMONIALS ★ ★ ★

*Our engagement with Gem has been very fruitful as despite having best of vendors and good quality standards, Gem helped us in raising our bar and brought us closer to achieving our goal of delivering a "zero defect" building. From just being "Good" we now strive to be "Excellent".*



- Aga Khan Development Network  
( through Prince Aly Khan Hospital)

*Overall performance of GEM team on this project has been very good, and we look forward to collaborating with GEM in future projects.*



- Tata Consulting Engineers Ltd.

*The structural Audit of TCHFC & TCFSL had a smooth process and the team was very supportive. Hope to be associated for a long period of time.*



- Tata Capital Financial Services Ltd.

*Your work is highly accurate and right first time. The team delivered the assignment on time. Your team supported us well when we had queries about your work.*



- Nuclear Power Corporation of India Ltd.

*Thank you for your support to our PJ. Your work is highly accurate and right first time. It was a pleasure interacting with your team.*



- Daewoo E&C, Singapore

*We have received appreciation from our client for getting ahead in detailing. Would like to convey our regards to you & your team. Well done!!*



- J&F, AUSTRALIA

*Overall good to work with GEM. Your fee structure is highly competitive.*



- Tata Projects Ltd.

*IRCON is fully satisfied with services, deliveries, manpower deployed on the project for planning, scheduling & monitoring of our project.*



- IRCON International Ltd.

*From the start of the project, the deployed resources are very good at work. Support from ROIHO is excellent.*



- Godrej Properties Ltd.

*We appreciate GEM Engserv's fast response & quick turnaround time for completing RC detailing of project on time.*



- Whitbywood Ltd., United Kindom

*GEM Engserv has successfully completed detailed design of foundation for doubling of track from Roha to veer over konkan railway with satisfactory quality and time.*



- Konkan Railway Corporation Ltd.

*The work completed is always to a high standard. All queries are addressed at the time and the service is impeccable.*



- Plann3D Solutions Ltd, United Kingdom

*This was a difficult task with a tight deadline and numerous additional tender addendums. The GEM team completed the task in a timely manner.*



- Vector International, Hong Kong

**CONSISTENTLY DELIGHTING  
OUR CUSTOMERS !**

GEM Engserv wins platinum category award from Apex India Quality Management - 2022 for Godrej Rejuve, Godrej Nurture

GEM Engserv wins an award for completing Plinth Level with Zero Man-Days Loss for Godrej 2 Project

GEM Engserv wins an award for Best Safety Implementation on site for Godrej 2 Project

# OUR CLIENTS

## INDIA (REAL ESTATE)



## INDIA (INFRASTRUCTURE & EPC)



## INTERNATIONAL



## CONSULTANTS



## EMPANELMENT WITH VARIOUS ORGANISATIONS

Maharashtra State Police Housing & Welfare Corp Ltd.

Karnataka State Police Housing & Infra Development Corp Ltd.

Central Railway

NABARD

Export Import Bank of India

Public Works Department Aurangabad

GIC of INDIA

Global Procurement Consultants Ltd.

Maharashtra Natural Gas Ltd



# PROJECT MANAGEMENT CONSULTANCY

## WHAT

### SERVICES

- Construction supervision & coordination
- Bill certification & cost monitoring
- Schedule preparation & control
- Quality & safety management
- Documentation control
- MIS & reporting
- Bid Management

## WHY

### IMPORTANCE

- To complete project with aggressive timelines
- To execute in budgeted cost
- To deal with the complexity of designs
- To adhere to the defined scope of work
- To complete the project in safe working condition
- To have minimum rework & wastage
- To deal with ambiguity in roles & responsibility of the project stakeholders

## HOW

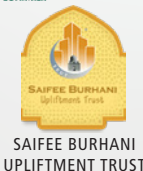
### METHODOLOGY

- Quick Ramp-up as required
- In-House resources during Pre-construction, During Construction & Post-Construction
- Dedicated manpower with ownership
- Direct supervision and guidance by senior management
- Expert teams in Head office to support PMC Functions

### STANDARDS & SOFTWARES

- PMBOK
- MS Sharepoint
- ProgeCAD
- Primavera P6 & MS Project
- ERP

### CLIENTS





**PROJECT MANAGEMENT CONSULTANCY**

**Godrej 2 -  
Commercial Tower  
( 1.2 Million Sq. Ft.)**

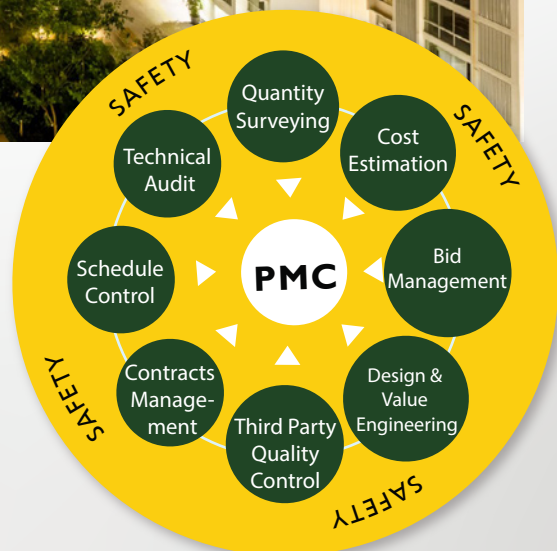


**Godrej Trees  
Residential Building  
(1.7 Million Sq. Ft.)**



**PRE - DURING - POST  
CONSTRUCTION**

**OUR ENGINEERS HAVE GOT IT ALL COVERED**





# QUALITY AND OHS MANAGEMENT

## WHAT

### SERVICES

- One time or periodic Quality Audits/OHS/Structural Audits
- Advisory to improve construction quality
- Third Party Quality Control
- Organisation-wide improvement through implementing QMS
- Providing an app to implement Quality Management at Projects
- Any combination of above

## WHY

### IMPORTANCE

- Ensuring quality of construction is a legal & moral responsibility
- Safe workplaces enhance productivity
- Your brand is as good as the quality of your product & service
- Quality costs, but the lack of quality costs even more!
- Quality app facilitates seamless integration of quality control with project execution
- Audits help you understand the quality of your quality control

## How

### METHODOLOGY

- We deploy QC engineers with experience in civil/finishing/MEPF activities as per the requirements of the project
- Doer-checker concept helps to promote 'Do it right the first time' concept.
- Independent QC engineers ensure that quality issues are escalated to the right person at the right time.
- An app based system is deployed to provide 'paperless' QC system
- All quality checks are integrated with construction workflow to avoid delays and disputes
- Use of app promotes evidence and facts based decision making
- All quality reports are generated from the system

### STANDARDS & SOFTWARES

- QC App
- ISO 9001
- IS specifications

### CLIENTS





**IF IT'S GEM,  
QUALITY IS ALWAYS ASSURED !**

  
ISO 9001:2015 CERTIFIED

**Quality Policy**

We are committed to consistently enhancing customer satisfaction by delivering value added, customer focused, and best in class services.

To achieve this, we shall continually improve our Quality Management System & comply with all the applicable statutory & regulatory requirements.

The Quality Objectives shall be based on this policy and shall be periodically reviewed & revised.

  
Shashank Vaidya  
Director

  
Mohana Raje  
Director

Version R 2  
Updated on dt: 01/04/2025

  
ISO 9001:2015 CERTIFIED


**Safety Policy**

We are committed to providing safe working conditions and healthy environment to all employee by eliminating hazards & reducing OH&S risks.

We shall ensure compliance with all legal & other requirements.

We shall consult and involve employees in the management of OH&S.

We shall continually improve the OH&S management by setting and monitoring OH&S objectives aligned with this policy.

  
Shashank Vaidya  
Director


  
Mohana Raje  
Director

Version R 1  
Updated on dt: 29/01/2021





**GEM Engserv wins platinum category award from Apex India Quality Management - 2022 for Godrej Rejuve, Godrej Nurture**



**GEM Engserv wins an award for completing Plinth Level during FY 17-18 with Zero Man-Days Loss for Godrej 2 Project**



**GEM Engserv wins an award for Best Safety Implementation on site for Godrej 2 Project**

★ ★ ★ CLIENT FEEDBACK & TESTIMONIALS ★ ★ ★

It gives us immense pleasure that VBHC's Vaibhava project Anekal, Bengaluru won "The Most Outstanding Concrete Structure of Karnataka" by the Indian Concrete Institute.

I appreciate for support and services offered by GEM Engserv for robust QMS and deploying state of the art technology in concrete construction.

- Chief Operating Officer, VBHC Pvt Ltd.

Third Party Quality Control (QC) services for our residential projects has helped these projects reach quality standards as per industry norms.

We wish you success in future assignments!

- Sr. Vice President, Purvankara Pvt Ltd.



# REBAR DETAILING AND BBS

## WHAT

### SERVICES

- 3D Rebar Detailing
- Bar Bending Schedules
- Reinforcement Quantity Take Off
- 2D Rebar Shop Drawings
- Structural GA Drawings
- AS Built Drawings

## WHY

### IMPORTANCE

- Additional space required for steelyard if cutting & bending done on site
- Saving in rebar placing efforts & time using BBS & Shop drawings
- Extra cost is incurred on wastage, cutting & bending inventory cost, technical monitoring, theft loss if stored on the yard
- Compliance to Safety Standards, Detailing codes, Shape code library
- Optimisation can help reductions in wastage/scrap

## How

### METHODOLOGY

- Reducing scrap with cutting and bending at site
- Use of similar dia/lengths of rebar through rationalizing area of reinforcement
- Use of simple shapes for ease of installation and understanding by site engineers
- Use of standard pre-assembled rebar cages for typical members like walls, columns, beams etc.
- Use of preassembled cages and special shape codes for projecting bars with importance to Health & Safety

### STANDARDS & SOFTWARES

- Softwares: CADS RC , 3D Revit
- INDIAN (IS2502, IS456, IS13920, SP34), American (ACI135,AC1318), British (BS8666, BS8110), European (EN1992-1-1), Australian (AS 3600)

### CLIENTS





## REBAR DETAILING AND BBS

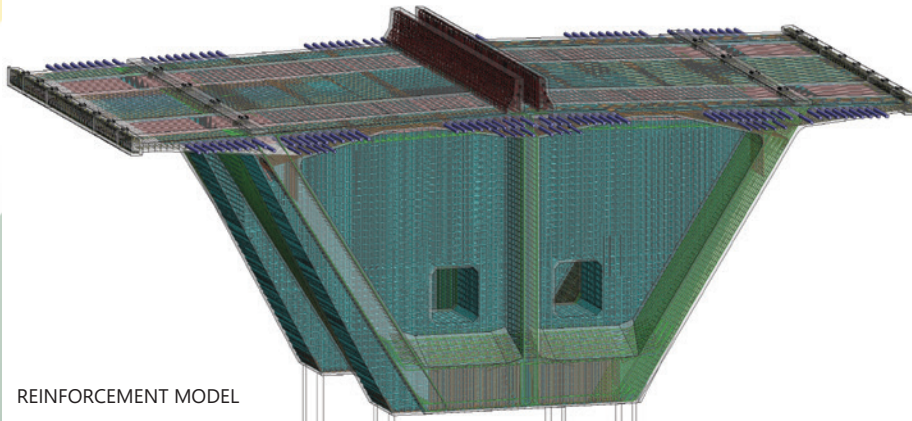


Mumbai Trans Harbour Link (MTHL)

**4,50,000+**  
Metric ton of  
Rebar Detailing  
& BBS



## 3D REBAR DETAILING



REINFORCEMENT MODEL

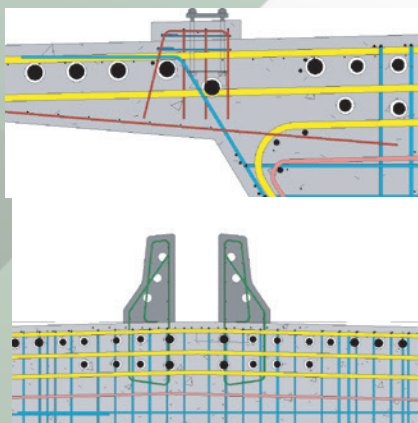


### THREE LEVELS OF CHECKING

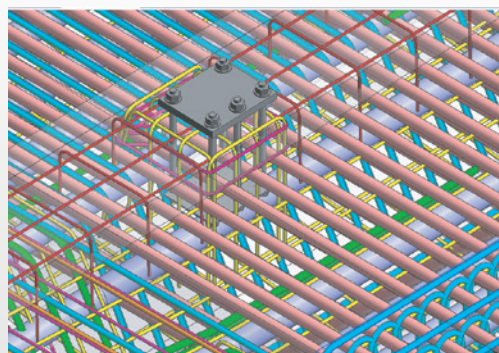
Self Check -  
Designer

100% Review -  
Checker

Overview & Submission -  
Team Lead



REINFORCEMENT MODEL





## QS & COST CONSULTANCY

### WHAT

#### SERVICES

- Quantity Surveying & BOQ Preparation
- Rate analysis
- Estimation & budgeting
- Cost planning & cost monitoring
- Assessment of cost to complete

### WHY

#### IMPORTANCE

- Accurate cost planning & continuous cost control protects the owner from financial shocks
- BOQ is an essential bridge between the design engineer & cost planner
- An accurate cost plan is of great help during finalization of contracts
- Cost planning helps to control cost at every stage of project development

### How

#### STAGES OF COST PLAN

- Broad cost plan at concept level
- Elemental cost plan at schematic level
- Detailed BOQ work out and cost plan at Design & Development stage
- Refining BOQ & cost plan at tender level
- Final construction cost plan on basis of GFC & awarded contracts
- Cost monitoring through construction phase including cost-to-complete assessment

#### STANDARDS & SOFTWARES

- MODE OF MEASUREMENT: NRM2, IS 1200, SMM7, CESMM4, POMI, ARM4

#### CLIENTS

**Godrej** PROPERTIES



**HCC**

**AFCONS**

**Mahindra**  
Lifespaces

**GRANITE**

**GT** GARDINER  
& THEOBALD



**SWINERTON**



**MARITIME**  
CONSTRUCTIONS



**MARTIN**  
HARRIS  
CONSTRUCTION

**BHIMJYANI**  
REALTY  
FORMERLY A PART OF THE NEELKANTH GROUP



**AMPCO**  
CONTRACTING, INC.





**QS & COST CONSULTANCY**

**◆ WHATEVER YOU DRAW, WE CAN TAKE OFF ◆**



**CHENAB BRIDGE**

“GEM Engserv has successfully assessed structural steel quantities for Chenab Bridge to our satisfaction within stipulated time & quality, This bridge has a complex geometry like space frame with a curvature in two planes. The approx. quantities of structural steel involved were 28000 MT. ”

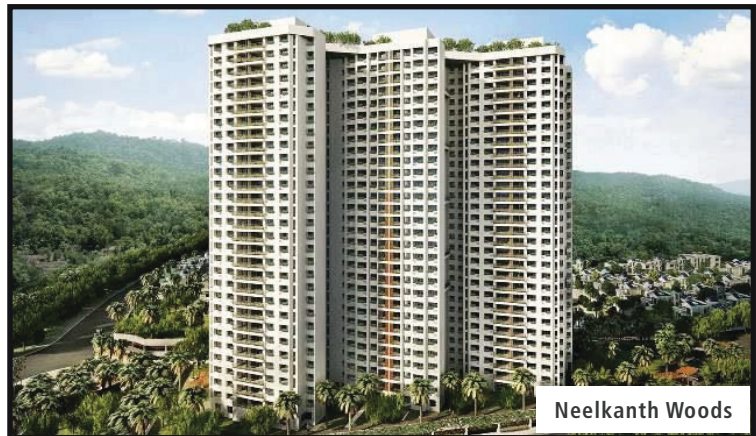
**Vice President - Afcons Infrastructure Pvt Ltd.**



**7.5 Million Sq. Ft Bhandi Bazaar Cluster Development**

“GEM Engserv has satisfactorily completed Quantity Surveying & Cost Estimation for Saifee Burhani Upliftment Project,,

**General Manager (Contracts) - SBUT Pvt Ltd.**

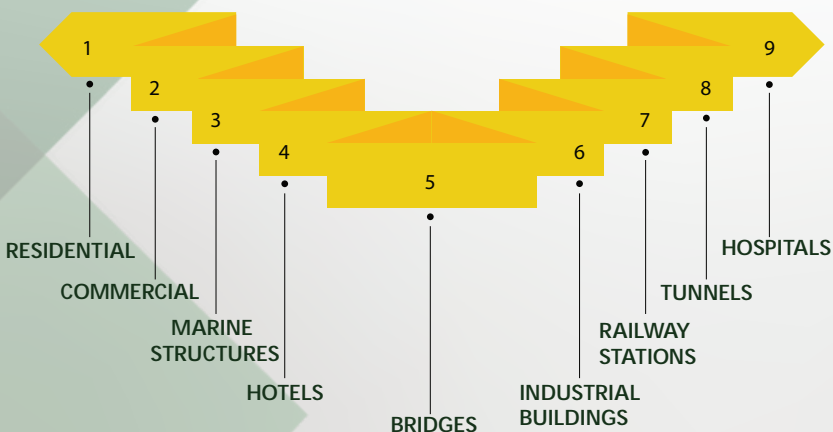


**Neelkanth Woods**

“GEM Engserv has satisfactorily completed preparation of cost plan, contracting strategy, Bid Management, Cost Monitoring by on-site deployment as per stipulated time & quality. ,,

**Sr. Vice President - T Bhimjiyani Realty Pvt Ltd.**

**SERVICE SECTORS**



“GEM Engserv has satisfactorily provided and completed Quantity take off and preparation of Bill of Quantities for Oceanwide Plaza’s structure, finishes, MEP & Rebar take-off within stipulated time & quality. ,,

**Director, Swinerton Builders USA**



## TRAINING & DEVELOPMENT

### WHAT

#### SERVICES

- Rigorous full-day training program by senior industry experts
- Personalized training programmes to master specific topics
- Case study based teaching method to give hands-on experience
- Quiz and interactive sessions in an open forum
- Corporate training program at clients facilities

### WHY

#### IMPORTANCE

- To expand the knowledge base of engineers
- To improve employee performance by equipping them with new skills
- To understand quality standards and industry benchmarks
- To stay updated with industry best practises & to have competitive edge
- Networking opportunity with fellow industry colleagues

### FACULTY



Dr. Mohana Raje LLM, Ph.D  
Director



Mr. Shashank Vaidya  
Director



Mr. Shailesh Mirkar  
Vice President



Mr. Ranjit Patil  
Vice President



Mr. Sanjiv Anand  
Chief Operating Officer



Mr. Sanjay Singh  
Vice President

### CLIENTS





ORGANIZED BY  
skill groomers

**2500+**  
Industry Professionals  
Trained & Certified



ISO 9001:2015 CERTIFIED

## COURSES DELIVERED SO FAR...

Concrete Mix Design

Quality management in concrete construction

Developing Internal Auditors for Quality/Safety/ISO 9001 based on Audits

Value Engineering in Construction

Design Engineering for Construction Professionals

Art & Science of Decision making for project execution

Construction Contracts

Basic of construction project management

Management of reinforcement works

Project Operations

Work Life Balance

Stress Management

Communication Skills for Engineers



## ★★★★★ PARTICIPANTS FEEDBACK ★★★★★

★★★★★

It is a must needed program to undergo this type of training. It really helped in practical implementation.

★★★★★

Demonstration skills of the faculty were very impressive & the problems solving approach was very helpful

★★★★★

Nothing to suggest anything as the program was already very good!

★★★★★

The Faculty was knowledgeable and solved all my doubts with personal attention. I look forward to attend again in the next lectures

★★★★★

This program was very informative and conducted to the best, got insights on the latest technology in the industry..



# STRUCTURAL DESIGN ENGINEERING

## WHAT

### SERVICES

- Design of bridges
- Peer review of bridge designs
- Design of buildings
- Peer review of design of buildings
- Design of temporary arrangements
- Structural audit of bridges & buildings
- Value Engineering
- Defect Diagnostics

## WHY

### IMPORTANCE

- Audits help assess the structural health of assets
- Value Engineering helps in optimization of cost / time
- Structural designs / Peer reviews ensures code compliant and safe structures
- Temporary works ensures speed & safety of construction

## HOW

### METHODOLOGY

- We have structural design engineers from premier engineering institutions
- Engineers trained in audit of quality of construction & structural behaviour carry out the inspection
- Association with reliable agencies for NDT
- Experts with design, construction & audit experience to guide & mentor the team

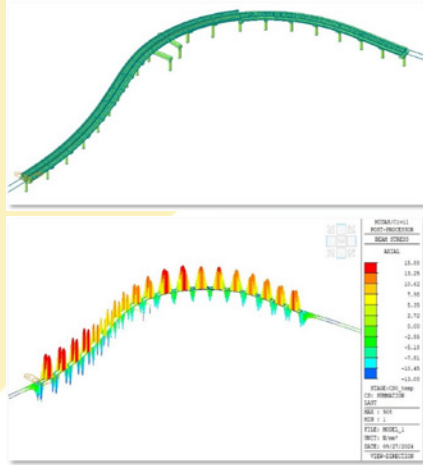
### STANDARDS & SOFTWARE

- Software: STAAD PRO / ETABS / SAP 2000 / CSI BRIDGE / SAFE

### CLIENTS



Substructure design for railway bridges



RAIL Structure Interaction Analysis for railway bridges



Structural Design for precast boxes



Structural Design of Inspection Shed (20m X 50m), Depot Office building and other structures.



Proof checking of structural design for 142 Mtr long Railway Flyovers at ETAWAH AND BHAUPUR



Proof checking of structural design for ROHA-VEER DOUBLING PROJECT: 11 Major Bridges with length ranging from 36 m to 256 m



# TALENT ACQUISITION

## WHAT

### SERVICES

- Recruitment of site and office based staff
- Employee profile background checks
- Off-role staffing solutions
- Corporate training and open programmes
- Advisory for competency mapping

## WHY

### IMPORTANCE

- Identifying right fit for key profiles is critical
- External support helps establish right pay for the right job
- Culture fit between employer and employee is essential
- Background checks ensure that there are no surprises

## HOW

### METHODOLOGY

- Extensive profiles database for all positions
- Quick screening of profiles during identification
- Three levels of interviews before reviewing CVs
- Right first time approach for evaluation on culture fit

### STANDARDS & SOFTWARE

- Extensive In-house profile database, Naukri Portal

### CLIENTS



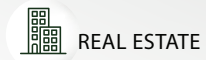


## Trusted Partner for Tailored Solutions

GEM Engserv takes complete ownership for onboarding of clients and follows the robust talent acquisition strategies to meet your deadlines and objectives. We believe in conceptualising and creating plan as per your tailored needs.

With the extensive use of our network across industries and using various talent sourcing channels, Skill Groomers has been a trusted talent solutions partner for many reputed companies across India and globally.

### SECTORS SERVED



REAL ESTATE



INFRASTRUCTURE



INDUSTRIAL



OIL & GAS



POWER

**1500+**

Candidates recruited domestic & international

**2500+**

Industry Professionals trained

**250+**

Partnered with clients globally

**100%**

Client satisfaction

## TEMPING / OFF ROLE MODEL

The secondment services model of GEM Engserv allows clients to onboard skilled workers for specific projects without incurring the costs and liabilities associated with hiring permanent staff. This module offers flexibility and versatility, as staff can be easily swapped in and out as project requirements change.

This module eliminates the need for clients to take on payroll liabilities, making it an ideal solution for companies looking for cost-effective and low-risk staffing solutions.

## RECRUITMENT MODEL

The recruitment model of GEM Engserv provides a comprehensive solution for companies looking for long-term staffing solutions and offers greater stability for employees.

The main benefit of this module is that it provides clients with the ability to fully integrate new employees into their organization and offer benefits and opportunities for career development.

## WHY GEM ENGSERV ?





## SAFETY MANAGEMENT SERVICES



### SERVICES

- Conduct one-time OR period SHE Audit of an ongoing construction project
- Provide Third-party Safety Deployment
- Safety Training and Skills Assessment
- Digital Platform for Safety Management (Paperless)
- Environmental Management System (EMS) Audit



### IMPORTANCE

- Third-party safety deployment is needed because safety management is no longer just a philanthropic act but is now aligned with business objectives
- The potential consequences of ignoring safety can be huge, counterproductive, and detrimental to the growth of the business
- Audit by an independent agency is more effective in assessing the implementation of safety practices because they provide an unbiased and objective evaluation
- Independent safety professionals are more effective in ensuring safety protocols than in-house resources with the same level of competence



### METHODOLOGY

- **THIRD-PARTY SAFETY MANAGEMENT**
  - The Safety Management service proposed by GEM will require the full-time deployment of a safety manager, officer & supervisor
  - The scope of the activities performed by them and their deliverables are as per the best practises with respect to roles and responsibilities
- **SAFETY AUDIT**
  - The audit will be on a sample basis based on the stage of construction. During the audit, auditors will cover various work fronts and all facilities
  - The audit report will include assessment of the status of implementation of OHS measures and recommendations for improvement

### WHO CAN USE

- Real estate developers
- Owners of under construction infrastructure projects
- Contractors

### CLIENTS

